

Meeting Agenda

April 21, 2022

Meeting Location

Greater Spokane Valley Chamber of Commerce - 10808 E Sprague Ave, Spokane Valley, WA 99206

Virtual Option (Zoom) <https://us02web.zoom.us/j/85335532251?pwd=Qmc0WUJMTTVFcFEyNGdEUjc4Y3JXZz09>

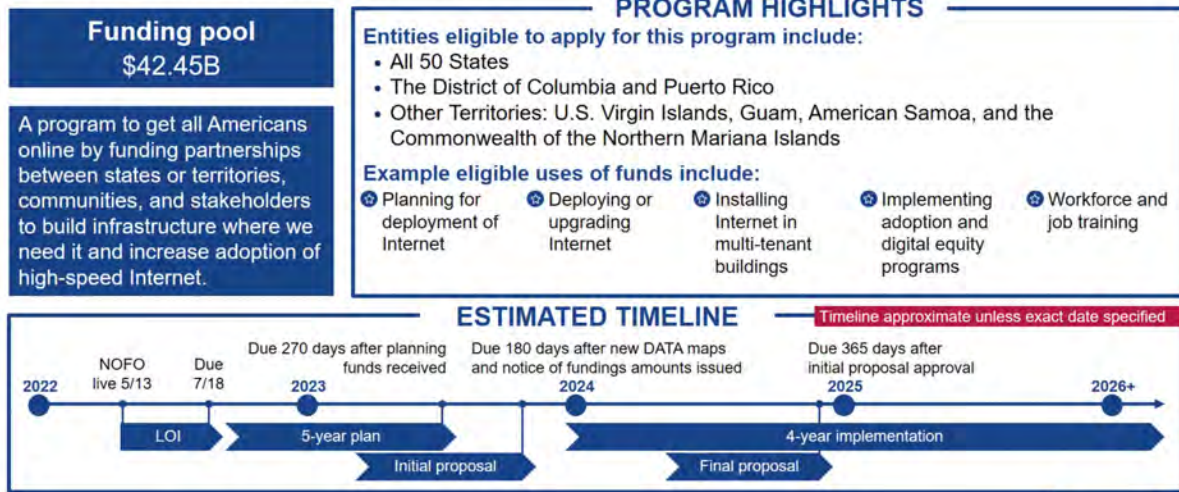
Meeting ID: 853 3553 2251

Passcode: 095750

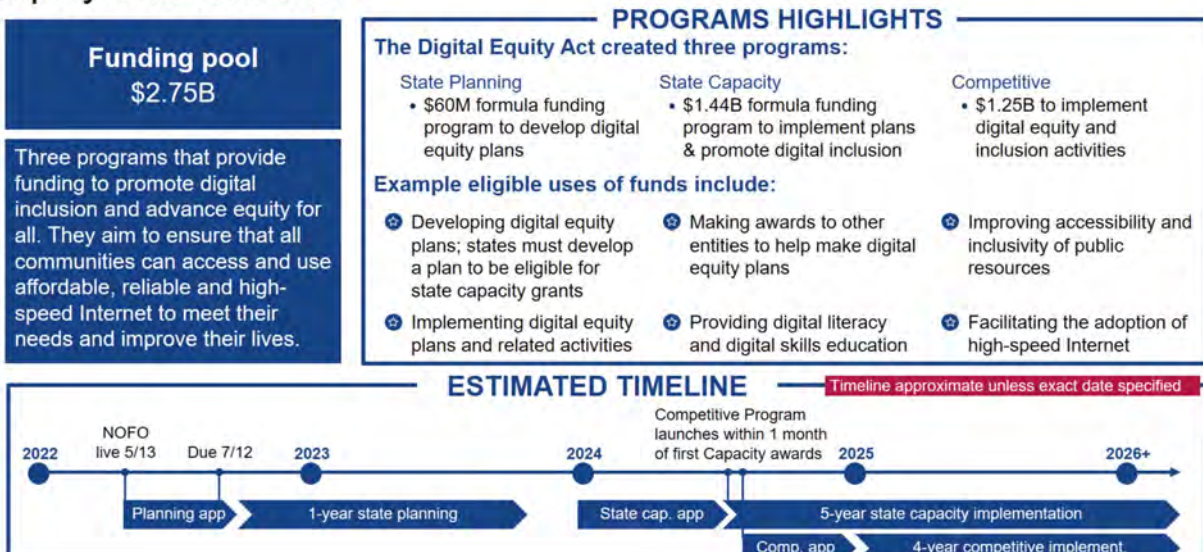
1. **Welcome & Introductions**
2. **FCC National Broadband Map –Bulk Challenge Submission 3/15/23 (5min)**
 - Spokane County Submission Part/Full Approved
 - FCC Published Review Map for Spokane County
3. **Spokane BAT Broadband + Digital Equity Planning (BEAD) Workbook Update**
 - DEEP DIVE: Worksheet 7 Map Review (Clair Ward and Nick Pappin) (20 minutes)
 - Statewide Map [Statewide Broadband and Digital Equity Map \(arcgis.com\)](https://arcgis.com)
 - Tutorial <https://youtu.be/pgkFoMJ-mFg>
 - Spokane StoryMap
<https://storymaps.arcgis.com/stories/e436f23b15b54860a222cc8808db9b60>
 - BEAD Timelines (5min)
 - Workbook Content for BAT member content (5 min)
4. **Guidehouse & Spokane Listening Session (5 min)**
 - Spokane Focus Meeting 5/9 4pm-6pm Spokane County Water Resource Center (WRC) Conference Room (210 N Havana St, Spokane, Washington 99212)
 - Invite Coming
 - WA Map for All Meetings
5. **WA Commerce Digital Navigators Grant Update (next meeting)**
6. **State and Federal Policy (5 min)**
7. **Grant Update (5 min)**
8. **BROADLINC Public Development Authority (5 min)**
 - BAT Website
9. **BAT Members General Updates (5 min)**
10. **Next Meeting - April 19th at 1000** in person and virtual attendance options

BEAD Timelines

BEAD program will provide ~\$42.45B for infrastructure planning and implementation

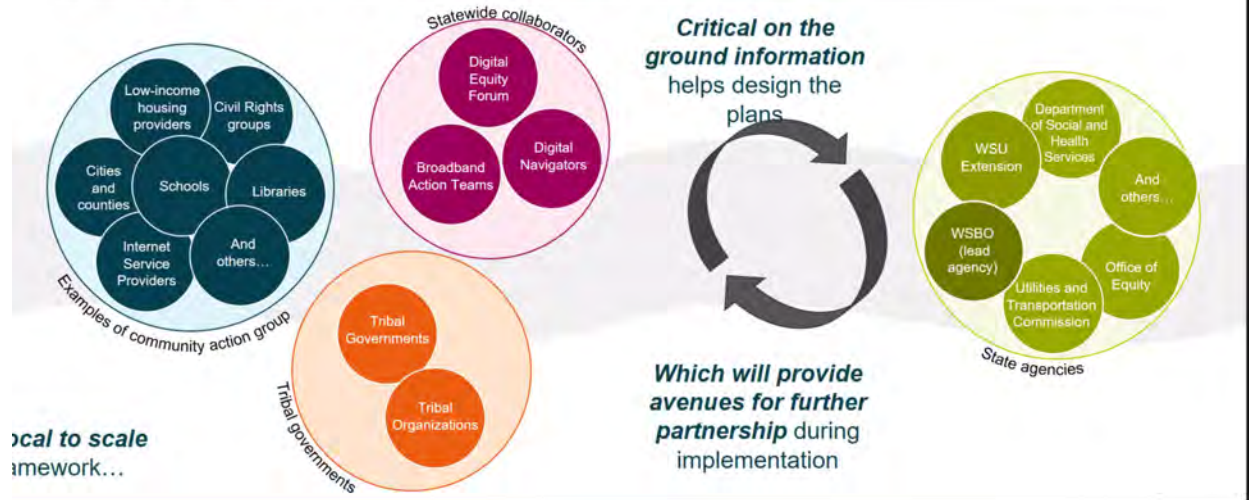


Digital Equity Act created three programs to promote digital equity and inclusion



Stakeholders and Guidehouse Report Timeline

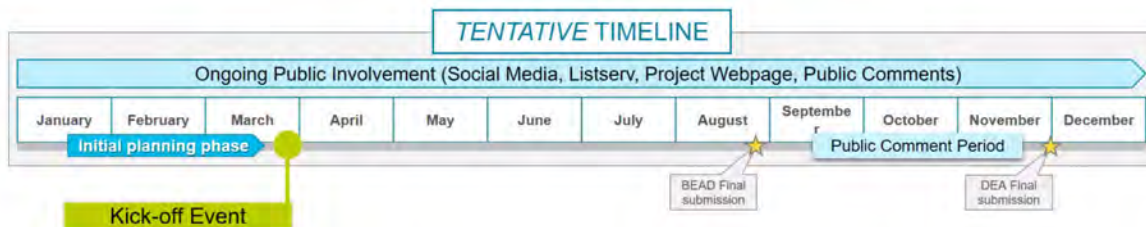
We recognize many stakeholders in the State are active in this space. Our intent is to listen and amplify ideas as we draft the BEAD and Digital Equity Plans that enable the state to apply for federal funding.



Local to scale
 framework...

Covered Populations—The term “covered populations” means:

1. Individuals who live in covered households;
2. Aging individuals;
3. Incarcerated individuals, other than individuals who are incarcerated in a Federal correctional facility;
4. Veterans;
5. Individuals with disabilities;
6. Individuals with a language barrier, including individuals who—
 - a. Are English learners; and
 - b. Have low levels of literacy;
7. Individuals who are members of a racial or ethnic minority group; and
8. Individuals who primarily reside in a rural area.



FCC Published Review Map (April 2023)

Spokane County Review Areas

